



A solar panel manufacturer with 15 years of experience.

ONE WORLD, ONE HOME,
BLUE SKIES.



SHENZHEN SOLAR MANUFACTURER

SUNGOLD SOLAR CO., LTD



ONE WORLD, ONE HOME, BLUE SKIES

Solar panel manufacturer committed to low-carbon life

CONTENTS

01

ABOUT US

About us	02
Introduction	03
Certificate	04

02

NEW ARRIVAL

Hi-Power Series	06
HP-B Series	09
PV balcony systems	12

03

FLEXIBLE SOLAR PANEL

TF Series	18
LEE Series	21

04

PORTABLE SOLAR PANEL

Winner bag Series	24
SPC Series	27
BXF Series	30

05

FOLDING SOLAR PANEL

LVP Series	33
SGF Series	35

06

RIGID SOLAR PANEL

SGSP Series	38
SGM Series	38
SGD Series	38



ABOUT US

Founded in 2008, Shenzhen Sungold Solar Co., Ltd. has always led the way with high-performance photovoltaic modules that can handle harsh environments. Sungold has developed a wide range of adapted products for RVs, yachts, outdoor applications, balcony systems, camping, etc.

With 15 years of rich experience, Sungold products have passed TUV, UL, FCC, CE, ROHS, and other European and American product certifications, as well as earthquake and hail resistance certification.

☎ +86-(0)755-2968-5821

✉ sales@sungoldsolar.cn

🌐 www.sungoldsolar.com

GRATEFUL, DEVELOPING, GROWTH

A solar panel manufacturer with 15 years of experience.

Introduction

Accumulating the experience for more than a decade, Sungold has become a company with mature technology and management system.



Office



Laminator series



Meeting Room



Laboratory



Laser cutting machine

Certificate

Sungold products have passed TUV, UL, FCC, CE, ROHS and other European and American product certifications, as well as earthquake and hail resistance certification and IEC 61701 (salt spray) certification. Our products are also certified to IEC 63163, a test standard specifically for consumer PV designs. We have also passed BSCI certification, ISO9001 quality management certification and ISO14001 environmental management certification.



ISO14001



ISO9001



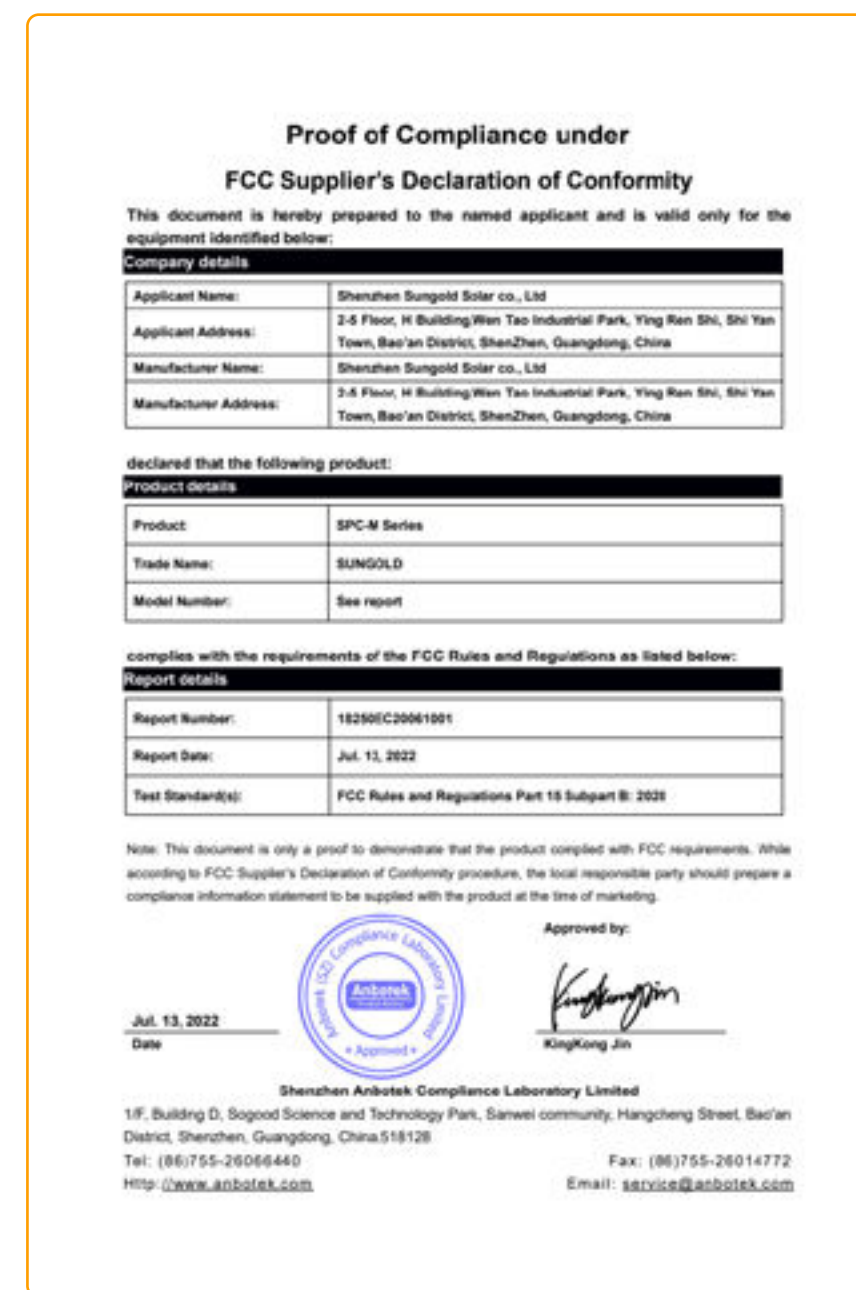
Trademark



TUV



UL



FCC



CE



RoHS

NEW ARRIVAL

NEW ARRIVAL

Hi-Power / HP-B / PV balcony systems

HI-POWER SERIES

PORTABLE SOLAR PANELS

IP67 waterproof / Lightweight / Suitable for high-power portable power station



Product Features

Hi-Power series solar panels are ideal for outdoor living. The solar panels are designed for high-capacity portable power stations.

APPLICABLE TO PORTABLE POWER STATION

Sungold Hi-Power 4*100W folding solar panel is suitable for 1-2.5 kWh portable power stations. We also provide you with wiring to meet your needs for small Anderson, DC, MC4, and other interfaces for easy use.



Easy to use



High power output



IP67 waterproof rating

SPECIFICATION

Model	Cells	Folding Size	Unfold Size	Voc(V)	Vmp(V)	Isc(A)	Imp(A)
HP-2*100W	Mono	987*547*50mm	1095*987*25mm	21.40	18.20	11.87	10.99
HP-3*100W	Mono	987*547*70mm	1640*987*25mm	21.40	18.20	17.80	16.49
HP-4*100W	Mono	987*547*90mm	2188*987*25mm	42.70	36.30	11.90	11.02
HP-2*110W	Mono	1072*547*50mm	1095*1072*25mm	23.30	19.80	12.00	11.12
HP-3*110W	Mono	1072*547*70mm	1640*1072*25mm	23.30	19.80	18.00	16.67
HP-4*110W	Mono	1072*547*90mm	2188*1072*25mm	46.60	39.60	12.00	11.12
HP-D-2*100W	Shingled-cell	900*590*50mm	1180*900*25mm	21.50	18.20	11.65	10.99
HP-D-3*100W	Shingled-cell	900*590*70mm	1772*900*25mm	21.50	18.20	17.47	16.49
HP-D-4*100W	Shingled-cell	900*590*90mm	2362*900*25mm	43.10	36.50	11.62	10.96

Electrical Characteristics

The maximum system voltage	2*100W~3*110W DC 100
	4*100W~4*110W DC 200
Power temperature coefficient	-0.38%/°C
Voltage temperature coefficient	-0.36%/°C
Current temperature coefficient	+0.07%/°C
Output power tolerance	±3%
Operating Temperature	-20°C ~70°C
Waterproofing grade	IP67
Warranty	5 years

New Products

NEW

HP-B SERIES

PORTABLE SOLAR PANELS

Multifunctional application / High output power / Light-weight and portable

New products

Product Features

HP-B series is suitable for multiple application scenarios and multi-functional. Whether it is a balcony, garden, RV, or indoor, it can be used with all.

SCHEME I

Suitable for home off-grid systems, can be used with a microinverter. Support real-time detection to save your home's electricity bill.



Portable Solar Panels (4*100W)

+



Microinverter

=



Balcony

SCHEME II

Suitable for outdoor application scenarios. With bracket and easy to carry and store.

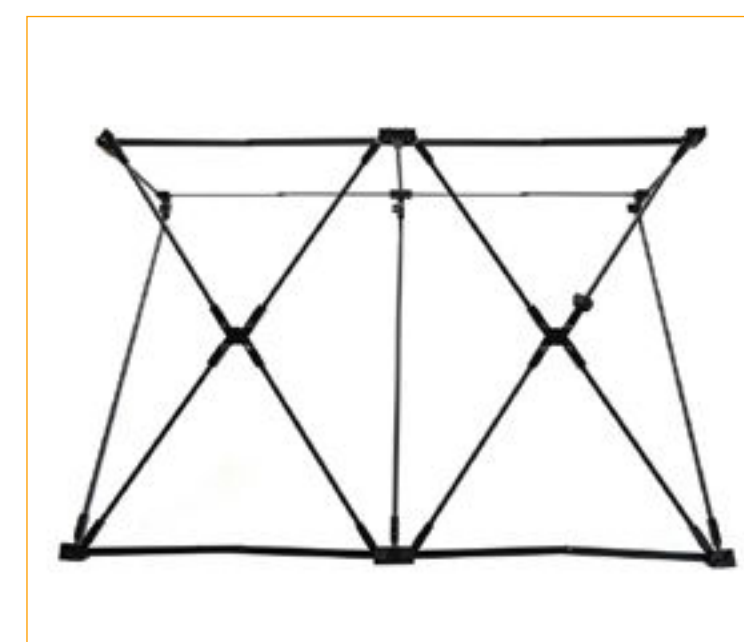


Portable Solar Panels (4*100W)

+



Bracket



(Unfold Bracket)

=



Garden

Electrical Characteristics

HP-B 4*100W		The maximum system voltage	DC 600
Cells	Mono	Power temperature coefficient	-0.38%/ °C
Solar Size	920*600*2mm*4pcs	Voltage temperature coefficient	-0.36%/ °C
Unfold Size	925*1230mm*320*2pcs	Current temperature coefficient	+0.05%/ °C
Voc(V)	48.00	Output power tolerance	±5%
Vmp(V)	41.00	Operating Temperature	-20 °C -+70 °C
Isc(A)	10.24	Waterproofing grade	IP67
Imp(A)	9.76	Weight	8.86KG
Bracket	1010*140mm	Output cable	MC4 to XT60 Adapter Cable 12AWG 5m
	1.39KG*2	Warranty	solar panel: 5-year warranty, 15-year lifespan

Micro Inverter

INPUT(PC)			OUTPUT(AC)		
Model	BDM~300	BDM~600	Model	BDM~300	BDM~600
Solar Panel Wattage	4*100W	4*100W*2	Solar Panel Wattage	4*100W	4*100W*2
Recommended Max PV Power (Wp)	450	450*2	Peak AC Output Power (Wp)	300	600
Max DC Open Circuit Voltage (Vdc)	60	60	Rated AC Output Power (Wp)	250	500
Max DC Input Current (Adc)	14	14*2	Nominal Power Grid Voltage (Vac)	230	230
MPPT Tracking Range (Vdc)	22~55	22~55	Rated Output Current (Aac)	1.26	2.52
SPECIFICATION			Nominal Frequency (Hz)	60/50	60/50
			Maximum Output Fault Current (Aac)	2.2A peak	4.4A peak
			Weighted Averaged Efficiency (CEC)	95.5%	95.5%

BALCONY MODULE SYSTEM

Balcony Solar Modules - Lightweight Solar Panels

Sungold's balcony solar system is designed with brilliant features to generate electricity at home from solar energy.



Lightweight Solar Module (2*200W / 4*200W)



Solar Brackets



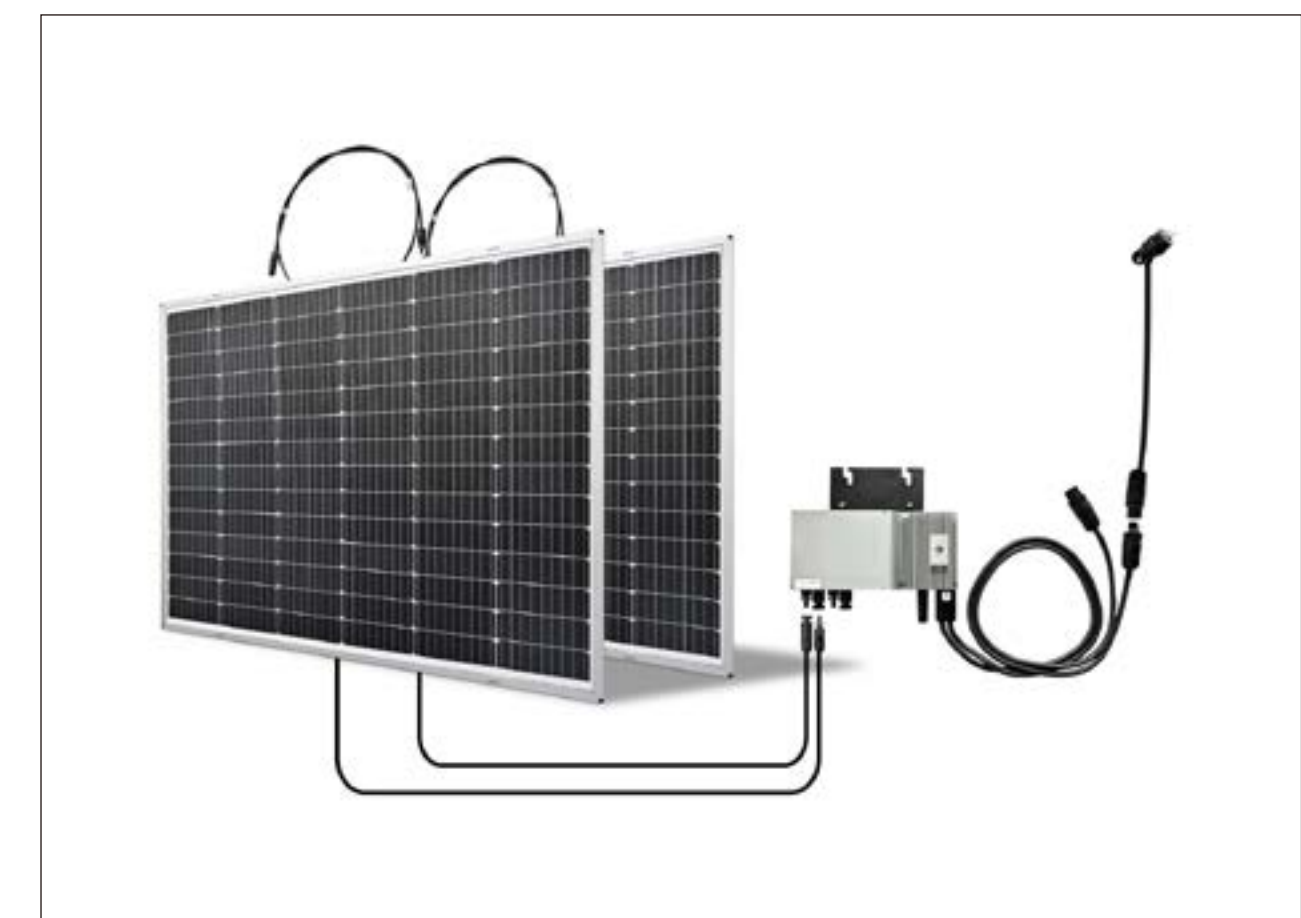
Microinverter



Lightweight Telescopic Bracket



Easy Installation



Plug and Play

Model	Cells	Product size	Voc(V)	Vmp(V)	Isc(A)	Imp(A)
SG-MB-200W	Mono	1155*945*5.5mm	27.90	23.90	8.79	8.37

Electrical Characteristics

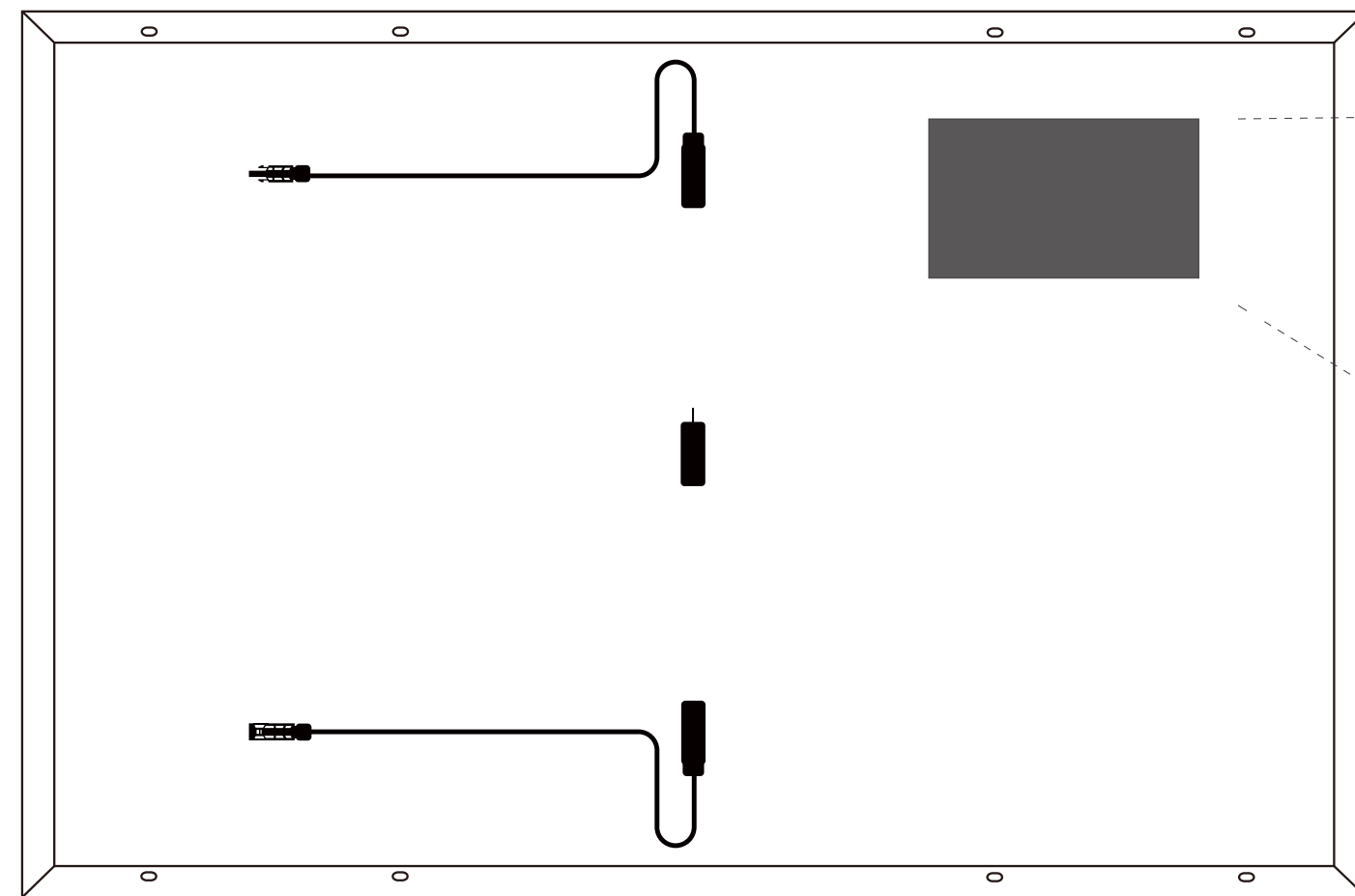
The maximum system voltage	DC 600
Power temperature coefficient	-0.38%/K
Voltage temperature coefficient	-0.36%/K
Current temperature coefficient	+0.07%/K
Output power tolerance	±3%
Operating Temperature	-40℃ ~85℃
Waterproofing grade	IP67
Weight	4.65KG

Micro Inverter

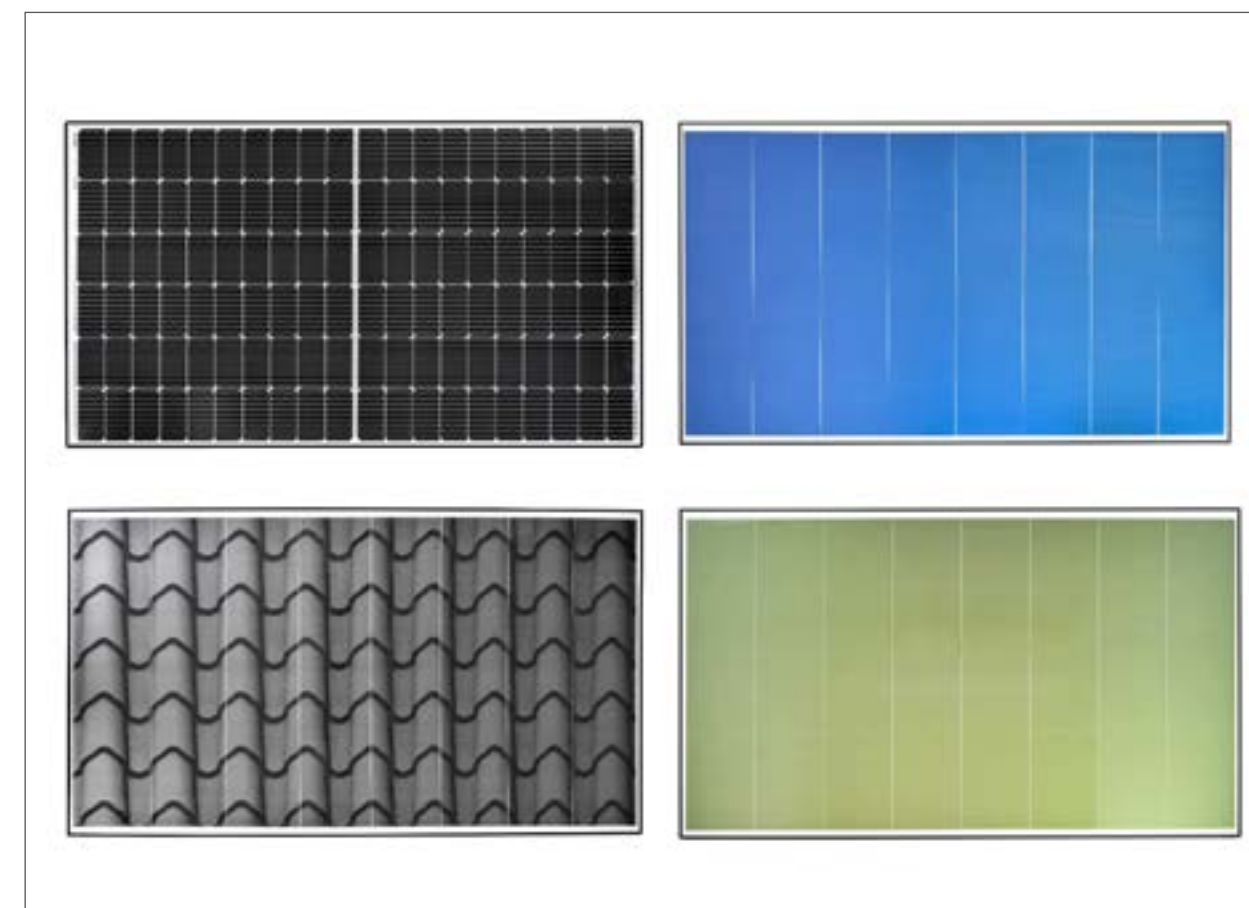
INPUT(PC)			OUTPUT(AC)		
Model	BDM~300	BDM~600	Model	BDM~300	BDM~600
Solar Panel Wattage	200W*2	200W*4	Solar Panel Wattage	200W*2	200W*4
Recommended Max PV Power (Wp)	400	400*2	Peak AC Output Power (Wp)	300	600
Max DC Open Circuit Voltage (Vdc)	60	60	Rated AC Output Power (Wp)	250	500
Max DC Input Current (Adc)	14	14*2	Nominal Power Grid Voltage (Vac)	230	230
MPPT Tracking Range (Vdc)	22~55	22~55	Rated Output Current (Aac)	1.26	2.52
SPECIFICATION			Nominal Frequency (Hz)	60/50	60/50
			Maximum Output Fault Current (Aac)	2.2A peak	4.4A peak
			Weighted Averaged Efficiency (CEC)	95.5%	95.5%

Rigid Balcony Module System

Recommended for you 750W (2x375w) rigid solar panel + 600W micro inverter



Mounting Bracket



Diversified Products



Easy Installation

Model	Cells	Product size	Voc(V)	Vmp(V)	Isc(A)	Imp(A)
SGM-375W	Mono	1770*1050*40mm	38.6	33.0	12.27	11.36

Electrical Characteristics

The maximum system voltage	DC 1000
Power temperature coefficient	-0.38%/°C
Voltage temperature coefficient	-0.36%/°C
Current temperature coefficient	+0.07%/°C
Output power tolerance	±3%
Operating Temperature	-40°C~+85°C
Waterproofing grade	IP65
Output cable	2*diodes +900mm/4mm ² cable+MC4 compatible
Warranty	10 years and service life 25 years

Micro Inverter

INPUT(PC)			OUTPUT(AC)		
Model	BDM~300	BDM~600	Model	BDM~300	BDM~600
Solar Panel Wattage	375W	375W*2	Solar Panel Wattage	375W	375W*2
Recommended Max PV Power (Wp)	400	400*2	Peak AC Output Power (Wp)	300	600
Max DC Open Circuit Voltage (Vdc)	60	60	Rated AC Output Power (Wp)	250	500
Max DC Input Current (Adc)	14	14*2	Nominal Power Grid Voltage (Vac)	230	230
MPPT Tracking Range (Vdc)	22~55	22~55	Rated Output Current (Aac)	1.26	2.52
			Nominal Frequency (Hz)	60/50	60/50
			Maximum Output Fault Current (Aac)	2.2A peak	4.4A peak
			Weighted Averaged Efficiency (CEC)	95.5%	95.5%

SPECIFICATION

FLEXIBLE SOLAR PANEL

TF / LEE Series



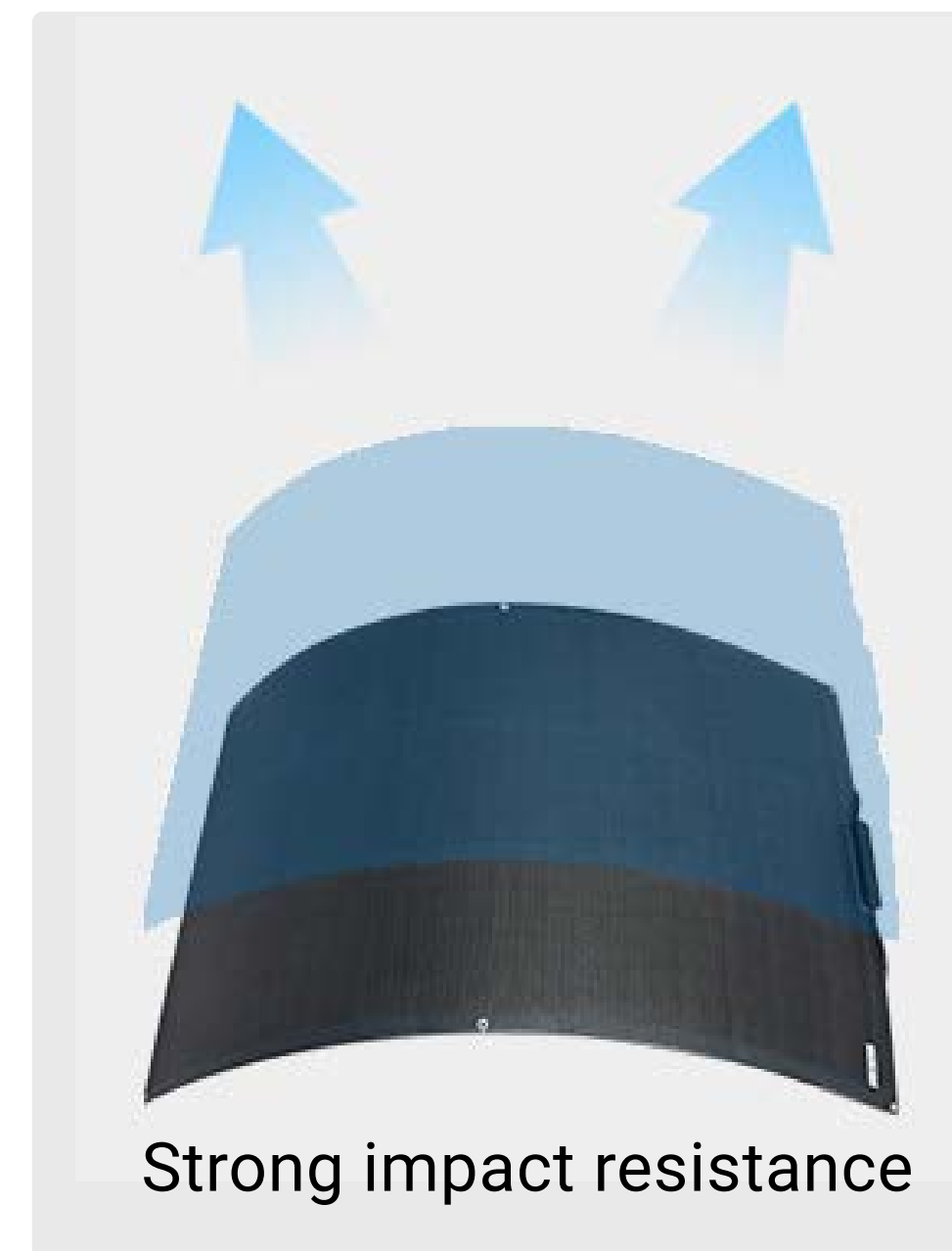
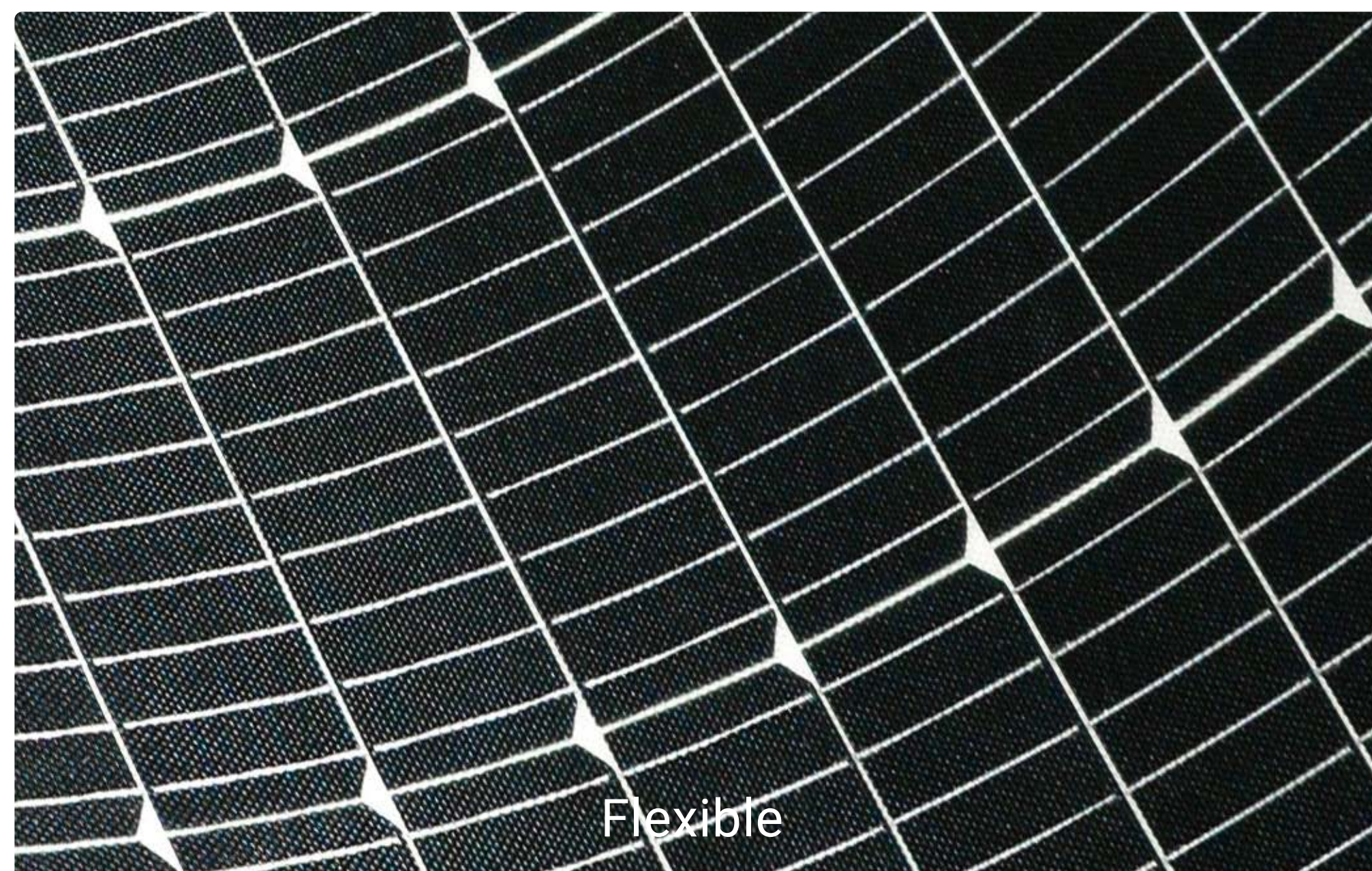
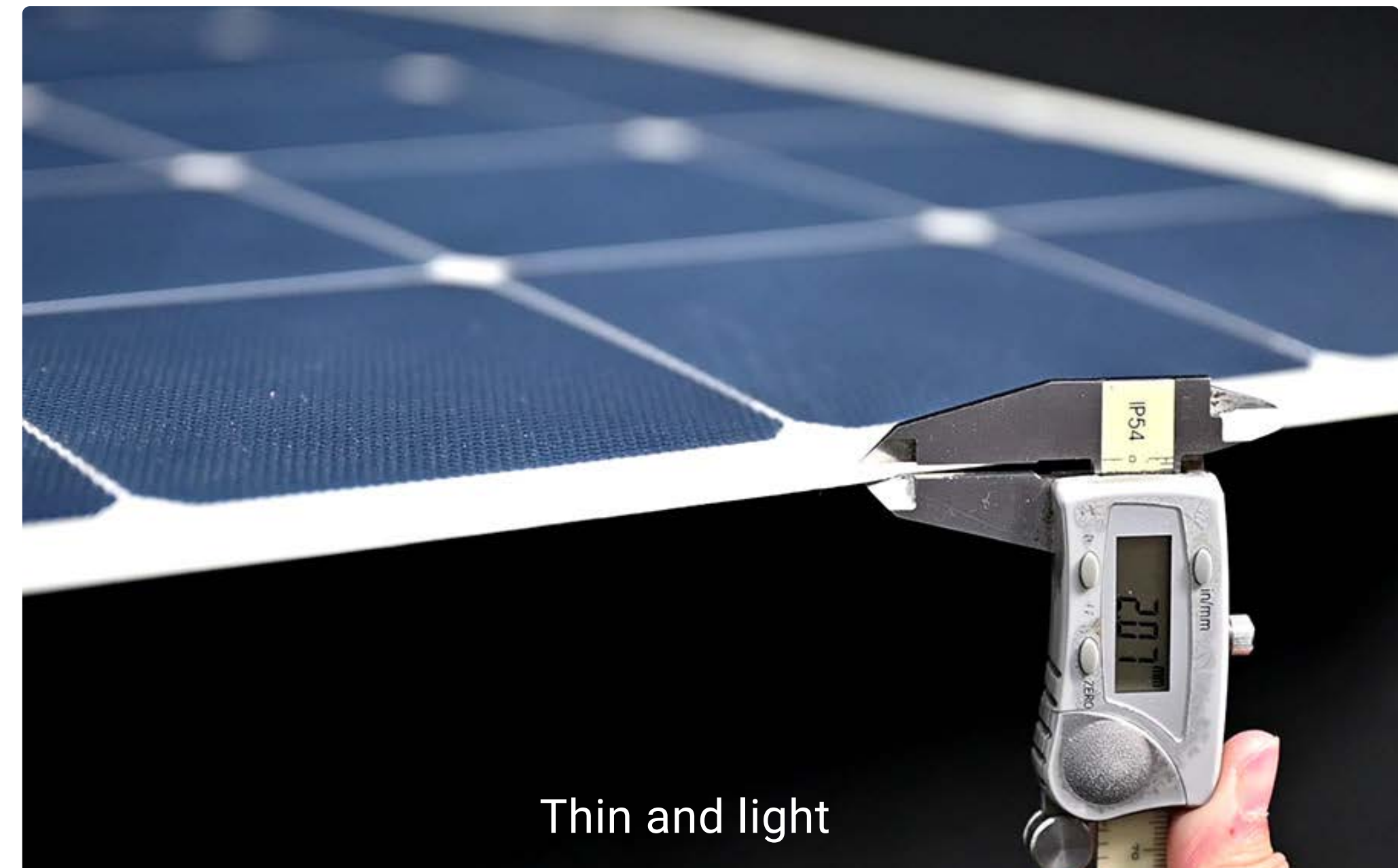
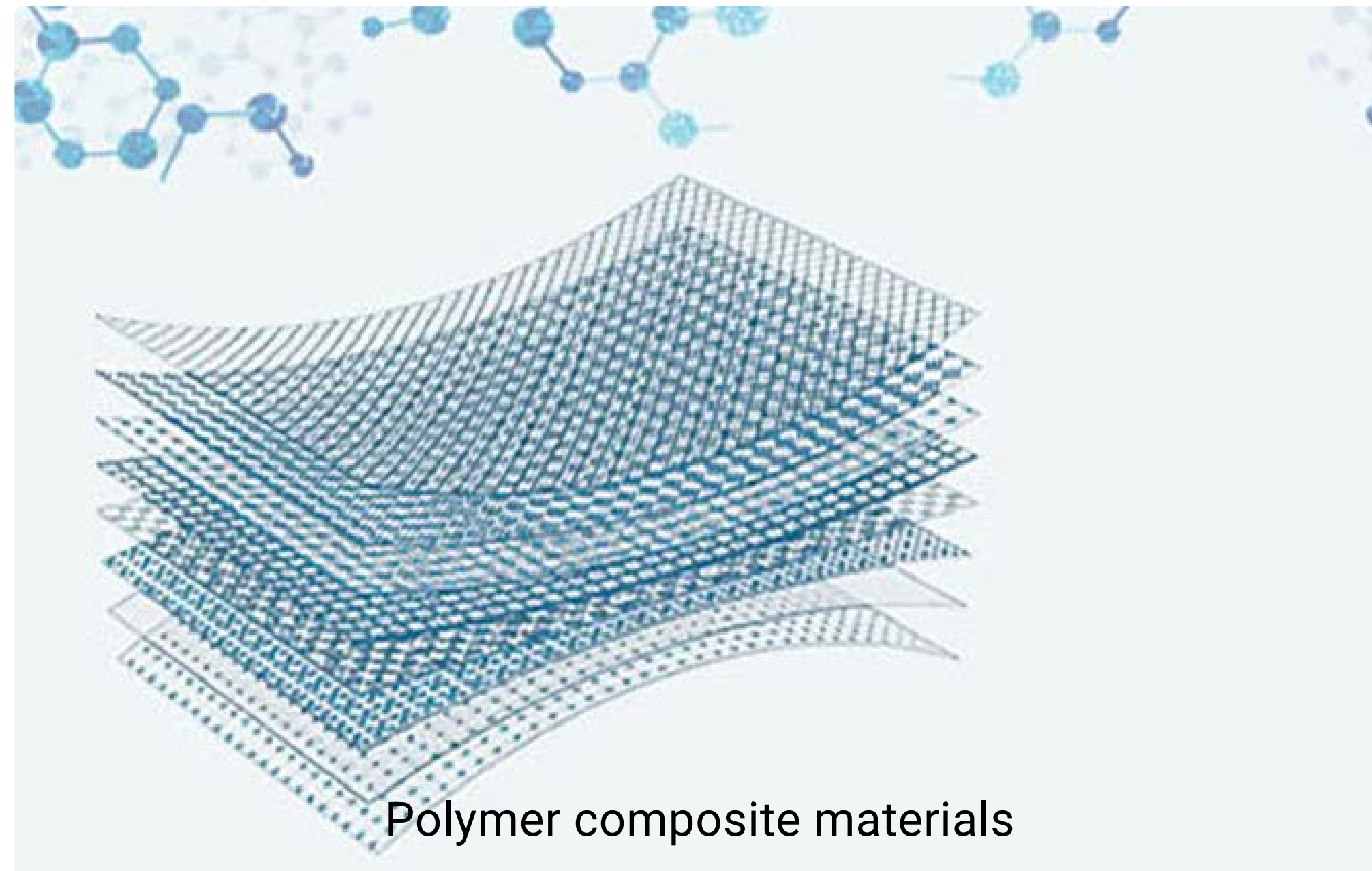
FLEXIBLE SOLAR PANEL

TF SERIES

Polymer composite material / 5 years warranty /
Strong impact resistance.

Product features

TF series solar panels have passed IEC, CE, ROHS certification. They are perfectly suitable for RV roof, yacht, BIPV, camping, etc.



Model	Cells	Model size	Voc(V)	Vmp(V)	Isc(A)	Imp(A)	Electrical Characteristics
SG-TF-M-55W	Mono	580*540*2mm	23.30	19.80	3.00	2.78	Mono:
SG-TF-M-70W	Mono	745*540*2mm	23.30	19.80	3.82	3.54	The maximum system voltage DC 600
SG-TF-M-110W	Mono	1080*540*2mm	23.30	19.80	6.00	5.56	Power temperature coefficient -0.38%/°C
SG-TF-M-150W	Mono	1110*710**2mm	23.30	19.80	8.18	7.58	Voltage temperature coefficient -0.36%/°C
SG-TF-M-200W	Mono	1435*710*2mm	20.70	17.60	12.27	11.37	Current temperature coefficient +0.07%/°C
SG-TF-M-220W	Mono	1610*710*2mm	23.30	19.80	12.00	11.12	Output power tolerance ±3%
SG-TF-M-245W	Mono	1780*710*2mm	25.90	22.00	12.03	11.14	Operating Temperature -40°C ~85°C
SG-TF-M-270W	Mono	1950*710*2mm	28.50	24.20	13.02	12.06	Warranty 5 years
SG-TF-S-60W	Sunpower	580*540*2mm	23.30	19.80	3.21	3.04	Sunpower:
SG-TF-S-90W	Sunpower	840*540*2mm	26.20	22.30	4.28	4.04	The maximum system voltage DC 200
SG-TF-S-120W	Sunpower	1070*540*2mm	23.30	19.80	6.42	6.07	Power temperature coefficient -0.27%/°C
SG-TF-S-135W	Sunpower	1200*540*2mm	26.20	22.30	6.42	6.06	Voltage temperature coefficient -0.24%/°C
SG-TF-S-150W	Sunpower	1330*540*2mm	29.20	24.80	6.41	6.05	Current temperature coefficient +0.06%/°C
SG-TF-S-165W	Sunpower	1460*540*2mm	32.10	27.30	6.41	6.05	Output power tolerance ±3%
SG-TF-D-50W	Shingled-cell	600*470*2mm	21.50	18.20	2.91	2.75	Operating Temperature -40°C ~85°C
SG-TF-D-100W	Shingled-cell	1170*470*2mm	22.20	18.80	5.64	5.32	Warranty 5 years
SG-TF-D-150W	Shingled-cell	1180*680*2mm	22.20	18.80	8.46	7.98	
SG-TF-D-200W	Shingled-cell	1550*680*2mm	29.60	25.10	8.45	7.97	
SG-TF-D-220W	Shingled-cell	1685*680*2mm	32.30	27.40	8.51	8.03	
SG-TF-D-250W	Shingled-cell	1450*890*2mm	27.60	23.40	11.32	10.69	
SG-TF-D-290W	Shingled-cell	1690*890*2mm	32.30	27.40	11.22	10.59	

SPECIFICATION

FLEXIBLE SOLAR PANEL

LEE SERIES

Double-sided ETFE material/High salt spray resistance /
IP67 waterproof rating



SPECIFICATION

Model	Cells	Model size	Voc(V)	Vmp(V)	Isc(A)	Imp(A)	Electrical Characteristics
LEE-M2-60W	Mono	830*395*4mm	21.30	18.20	3.46	3.30	Mono:
LEE-M2-100W	Mono	950*580*4mm	28.00	23.90	4.39	4.19	The maximum system voltage DC 200
LEE-M2-120W	Mono	1100*580*4mm	22.00	18.80	6.70	6.39	Power temperature coefficient -0.42%/°C
LEE-M2-150W	Mono	1010*765*4mm	26.70	22.80	6.91	6.58	Voltage temperature coefficient -0.32%/°C
LEE-M2-180W	Mono	1210*765*4mm	24.00	20.50	9.22	8.79	Current temperature coefficient +0.04%/°C
LEE-M2-220W	Mono	1475*780*4mm	40.00	34.2	6.75	6.44	Output power tolerance ±3%
LEE-M2-270W	Mono	1755*780*4mm	48.00	41.00	6.91	6.59	Operating Temperature -20°C~75°C
LEE-SP-40W	Sunpower	285*770*4mm	23.30	19.80	2.14	2.03	Warranty 3 years
LEE-SP-45W	Sunpower	425*570*4mm	26.20	22.30	2.14	2.02	Sunpower:
LEE-SP-60W	Sunpower	540*580*4mm	23.30	19.80	3.21	3.04	The maximum system voltage DC 100
LEE-SP-65W	Sunpower	540*650*4mm	26.20	22.30	3.09	2.92	Power temperature coefficient -0.27%/°C
LEE-SP-120W	Sunpower	540*1080*4mm	23.30	19.80	5.89	5.56	Voltage temperature coefficient -0.24%/°C
LEE-SP-135W	Sunpower	540*1205*4mm	26.20	22.30	6.42	6.06	Current temperature coefficient +0.06%/°C
LEE-SP-150W	Sunpower	540*1330*4mm	29.20	24.80	6.41	6.05	Output power tolerance ±3%
LEE-SP-165W	Sunpower	540*1470*4mm	32.10	27.30	6.41	6.05	Operating Temperature -20°C~75°C
							Warranty 3 years

PORTABLE SOLAR PANEL

PORTABLE SOLAR PANEL

WINNER BAG / SPC / BXF Series

WINNER BAG SERIES

PORTABLE SOLAR PANELS

High impact resistance / Foldable and portable / Flexible setup



Product Features

This solar panel has two models, A, and B. The A model has a solar junction box. There are USB, Type-C, and connectors on the box and a cable with an Anderson connector.

VERSION A



Version A product connector



Anderson / Type-C / USB



Portable power station / Electronic equipment

VERSION B



Version B product connector



Anderson



Portable power station

SPECIFICATION

Model	Cells	Folding Size	Unfold Size	Voc(V)	Vmp(V)	Isc(A)	Imp(A)
SGWB2-TF-D-2*50W-A	Shingled-cell	615*550*32mm	1100*615*16mm	22.90	19.40	5.46	5.16
SGWB2-TF-D-2*50W-B	Shingled-cell	615*550*36mm	1100*615*20mm	22.90	19.40	5.46	5.16
SGWB2-TF-D-4*50W-A	Shingled-cell	615*550*32mm	2040*615*16mm	22.90	19.40	10.93	10.31
SGWB2-TF-D-4*50W-B	Shingled-cell	615*550*36mm	2040*615*20mm	22.90	19.40	10.93	10.31

Electrical Characteristics

The maximum system voltage	DC 100
Power temperature coefficient	-0.38%/°C
Voltage temperature coefficient	-0.36%/°C
Current temperature coefficient	+0.05%/°C
Output power tolerance	±3%
Operating Temperature	-10°C ~60°C
Warranty	1 year

SOLAR PANELS POWER YOUR OUTDOOR JOURNEY.

SPC SERIES

PORTABLE SOLAR PANELS

2-year warranty / Impact resistant / Durable



Product Features

The SPC series portable solar panel is foldable for easy portability and storage, perfect for use in RVs or camping.



ULTRA-LIGHT AND PORTABLE

SPC series solar panels are lighter than similar products on the market.



USING THE NEW POLYMER COMPOSITE MATERIAL

With composite backing plate to enhance the impact and crack resistance of the product.



HIGH EFFICIENCY

SPC series solar charging pack adopts high-efficiency solar cells. High conversion efficiency.



2 YEARS WARRANTY

The SPC series solar charging kit has 2 years warranty. You can use it with confidence.

SPECIFICATION

Model	Cells	Folding Size	Unfold Size	Voc(V)	Vmp(V)	Isc(A)	Imp(A)
SPC-TF-S-2*45W	Sunpower	560*440*15mm	1075*560*4mm	26.20	22.30	4.28	4.04
SPC-TF-S-3*45W	Sunpower	560*440*20mm	1525*560*4mm	26.20	22.30	6.42	6.06
SPC-TF-S-4*45W	Sunpower	560*440*25mm	1975*560*4mm	26.20	22.30	8.56	8.08
SPC-TF-M-2*55W	Mono	565*550*15mm	1305*560*4mm	23.30	19.80	6.00	5.56
SPC-TF-M-3*55W	Mono	565*550*20mm	1855*560*4mm	23.30	19.80	9.00	8.34
SPC-TF-D-2x50W	Shingled-cell	615*470*15mm	1155*615*4mm	22.90	19.40	5.46	5.16
SPC-TF-D-3x50W	Shingled-cell	615*470*20mm	1630*615*4mm	22.90	19.40	8.20	7.74
SPC-TF-D-4x50W	Shingled-cell	615*470*25mm	2110*615*4mm	22.90	19.40	10.93	10.13

Electrical Characteristics

The maximum system voltage	Mono: DC 100	Sunpower: DC 100
Power temperature coefficient	Mono: -0.38%/°C	Sunpower: -0.27%/°C
Voltage temperature coefficient	Mono: -0.36%/°C	Sunpower: -0.24%/°C
Current temperature coefficient	Mono: +0.07%/°C	Sunpower: +0.06%/°C
Output power tolerance	Mono: ±5%	Sunpower: ±5%
Operating Temperature	Mono: -10°C ~60°C	Sunpower: -10°C ~60°C
Warranty	Mono: 2 years	Sunpower: 2 years

BXF SERIES

PORTABLE SOLAR PANELS

One-piece lamination / IP67 waterproof / Solar charger



SPECIFICATION

Model	Cells	Folding Size	Unfold Size	Voc(V)	Vmp(V)	Isc(A)	Imp(A)
BXF-N-D-2*7W	Shingled-cell	285*185*15mm	375*285*3mm	9.40	8.00	1.86	1.75
BXF-N-D-3*7W	Shingled-cell	285*185*37mm	570*285*3mm	9.40	8.00	2.79	2.63
BXF-N-D-4*15W	Shingled-cell	390*270*35mm	1075*390*3mm	20.20	17.10	3.72	3.51
BXF-N-D-4*25W	Shingled-cell	445*385*35mm	1530*445*3mm	22.20	18.80	3.52	3.32
BXF-N-D-2*50W	Shingled-cell	665*530*27mm	1000*665*18mm	22.90	19.40	5.46	5.16
BXF-N-D-3*50W	Shingled-cell	665*530*27mm	1485*665*18mm	22.90	19.40	8.20	7.74
BXF-N-D-4*50W	Shingled-cell	665*530*27mm	1975*665*18mm	22.90	19.40	10.93	10.31
BXF-H-2*55W	Mono	568*623*36mm	1246*568*20mm	23.30	19.80	6.00	5.56

Electrical Characteristics

The maximum system voltage	DC 100
Power temperature coefficient	-0.38%/°C
Voltage temperature coefficient	-0.36%/°C
Current temperature coefficient	+0.05%/°C
Output power tolerance	±5%
Operating Temperature	-10°C ~60°C
Warranty	1 year

FOLDING SOLAR PANEL

LVP / SGF Series

LVP SERIES

FOLDING SOLAR PANEL

Ultra-thin / Portability / Lightweight / IP67 waterproof rating



SPECIFICATION

Model	Cells	Folding Size	Unfold Size	Voc(V)	Vmp(V)	Isc(A)	Imp(A)
LVP2 130W A	Mono	635*595*50mm	1193*635*25mm	24.00	20.50	6.66	6.35
LVP2 180W A	Mono	820*595*50mm	1193*820*25mm	24.00	20.50	9.22	8.79
LVP2 270W A	Mono	900*780*50mm	1563*900*25mm	24.00	20.50	13.83	13.18

Electrical Characteristics	
The maximum system voltage	DC 100
Power temperature coefficient	-0.42%/°C
Voltage temperature coefficient	-0.32%/°C
Current temperature coefficient	+0.04%/°C
Output power tolerance	±3%
Operating Temperature	-10°C ~60°C
Warranty	1 year

POWERING YOUR LOADS WHEREVER YOU ARE.

SGF SERIES

FOLDING SOLAR PANEL

Durable / IP67 waterproof rating / 10 years warranty



SPECIFICATION

Model	Cells	Folding Size	Unfold Size	Voc(V)	Vmp(V)	Isc(A)	Imp(A)
SGF3-130W	Mono	615*590*30mm	1183*615*30mm	24.00	20.50	6.66	6.35
SGF3-180W	Mono	800*590*35mm	1183*800*35mm	24.00	20.50	9.22	8.79
SGF3-200W	Mono	925*590*35mm	1183*925*35mm	28.00	23.90	8.79	8.37
SGF3-240W	Mono	1070*590*35mm	1183*1070*35mm	22.00	18.80	13.40	12.77
SGF3-270W	Mono	885*770*35mm	1543*885*35mm	24.00	20.50	13.83	13.18
SGF3-300W	Mono	980*770*35mm	1543*980*35mm	26.70	22.80	13.82	13.16

Electrical Characteristics

The maximum system voltage	DC 100
Power temperature coefficient	-0.42%/°C
Voltage temperature coefficient	-0.32%/°C
Current temperature coefficient	+0.04%/°C
Output power tolerance	±3%
Operating Temperature	-10°C~60°C
Warranty	10 years

RIGID SOLAR PANEL

SGSP / SGM / SGD Series

SGSP / SGM / SGD SERIES

RIGID SOLAR PANEL

Sungold SGSP/SGM/SGD series rigid solar panel can be used in boats, RVs, caravans, camping, narrow boats, yachts, and other scenarios.



Product Category

Sungold's rigid solar panels include SGD series, SGSP series and SGM series.



SGSP SERIES

Sunpower cell



SGM SERIES

Monocrystalline cell



SGD SERIES

Shingled cell

SGSP SERIES

Model	Cells	Model size	Voc(V)	Vmp(V)	Isc(A)	Imp(A)	Electrical Characteristics	
SGSP-40W	Sunpower	540*395*25mm	23.30	19.80	2.14	2.03	The maximum system voltage	SGSP 40W~90W - DC 600
SGSP-45W	Sunpower	540*440*25mm	26.20	22.30	2.14	2.02		SGSP 120W~165W- DC 1000
SGSP-60W	Sunpower	560*540*25mm	23.30	19.80	3.21	3.04	Power temperature coefficient	-0.42%/ °C
SGSP-65W	Sunpower	625*540*25mm	26.20	22.30	3.09	2.92	Voltage temperature coefficient	-0.32%/ °C
SGSP-90W	Sunpower	835*540*30mm	26.20	22.30	4.28	4.04	Current temperature coefficient	+0.04%/ °C
SGSP-120W	Sunpower	1060*540*35mm	23.30	19.80	6.42	6.07	Output power tolerance	±3%
SGSP-135W	Sunpower	1190*540*35mm	26.20	22.30	6.42	6.06	Operating Temperature	-40 °C ~85 °C
SGSP-150W	Sunpower	1315*540*35mm	29.20	24.80	6.41	6.05	Warranty	10 years
SGSP-165W	Sunpower	1445*540*35mm	32.10	27.30	6.41	6.05		

SGM SERIES

Model	Cells	Model size	Voc(V)	Vmp(V)	Isc(A)	Imp(A)	Electrical Characteristics	
SGM2-65W	Mono	615*590*25mm	24.00	20.50	3.33	3.18	The maximum system voltage	SGM2 65W~90W - DC 600
SGM2-90W	Mono	800*590*30mm	24.00	20.50	4.61	4.40		SGM2 100W~450W- DC 1000
SGM2-100W	Mono	925*590*30mm	28.00	23.90	4.39	4.19	Power temperature coefficient	-0.42%/ °C
SGM2-120W	Mono	1070*590*35mm	22.00	18.80	6.70	6.39	Voltage temperature coefficient	-0.32%/ °C
SGM2-135W	Mono	1165*590*35mm	24.00	20.50	6.91	6.59	Current temperature coefficient	+0.04%/ °C
SGM2-150W	Mono	980*770*35mm	26.70	22.80	6.91	6.58	Output power tolerance	±3%
SGM2-180W	Mono	1180*770*35mm	24.00	20.50	9.22	8.79	Operating Temperature	-40 °C ~85 °C
SGM2-220W	Mono	1445*770*35mm	40.00	34.20	6.75	6.44	Warranty	10 years
SGM2-270W	Mono	1740*770*35mm	24.00	20.50	13.83	13.18		
SGM2-360W	Mono	1570*1134*40mm	48.00	41.00	9.22	8.79		
SGM2-450W	Mono	1930*1134*40mm	40.00	34.20	13.82	13.16		

SPECIFICATION

SGD SERIES

Model	Cells	Model size	Voc(V)	Vmp(V)	Isc(A)	Imp(A)	Electrical Characteristics	
SGD-M2-10W	Shingled-cell	310*250*18mm	21.50	18.20	0.58	0.55	The maximum system voltage	SGD-M2-10W~50W - DC 600
SGD-M2-25W	Shingled-cell	410*350*25mm	22.20	18.80	1.41	1.33		SGD-M2-100W~290W- DC 1000
SGD-M2-50W	Shingled-cell	575*450*25mm	21.50	18.20	2.91	2.75	Power temperature coefficient	-0.38%/ °C
SGD-M2-100W	Shingled-cell	1150*460*30mm	22.20	18.80	5.64	5.32	Voltage temperature coefficient	-0.36%/ °C
SGD-M2-150W	Shingled-cell	1150*670*35mm	22.20	18.80	8.46	7.98	Current temperature coefficient	+0.07%/ °C
SGD-M2-200W	Shingled-cell	1520*670*35mm	29.50	25.00	8.48	8.00	Output power tolerance	±3%
SGD-M2-220W	Shingled-cell	1650*670*35mm	32.30	27.40	8.51	8.03	Operating Temperature	-40 °C ~85 °C
SGD-M2-250W	Shingled-cell	1420*880*35mm	27.60	23.40	11.32	10.69	Warranty	10 years
SGD-M2-290W	Shingled-cell	1650*880*35mm	32.30	27.40	11.22	10.59		

SPECIFICATION





ShenZhen Sungold Solar Co.,Ltd



+86-(0)755-2968 5821



sales@sungoldsolar.cn



www.sungoldsolar.com



Wentao Industrial Park, Yingrenshi Community,
Shiyan Town, Shenzhen City, Guangdong Province, China